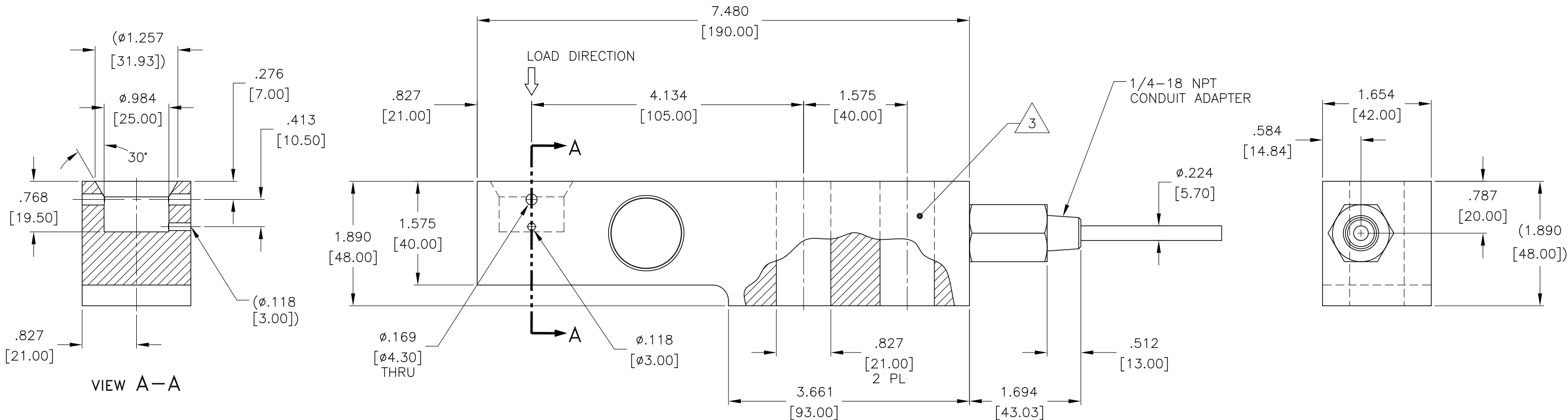


MODEL NUMBER	CAPACITY LBS [kN]	CABLE LENGTH FT [M]	MOUNTING BOLT AND GRADE	THREAD TORQUE FT-LBS [Nm]
HISBH04-7.5K	7.5 KLB [33.4kN]	20FT [6M]	.750-10 UNC GRADE 5 [M20 GRADE 8.8]	295 [400]

REV.	ECO/DDC	DESCRIPTION	DATE	DRAFT	CHECK	APV'D
A	----	RELEASED.	02-26-24	V.J.C.	J.M.	V.J.C.



7. LOAD SENSOR BODY IS ELECTROPOLISHED STAINLESS STEEL 17-4PH (1.4548).
6. CABLE IS SHIELDED, 6 CONDUCTOR. CABLE SHIELD IS FLOATING FROM LOAD SENSOR BODY. SEE TABLE FOR CABLE LENGTHS.
5. LOAD SENSOR WIRE COLOR CODE:
- | | |
|--------------|--------|
| EXCITATION + | RED |
| EXCITATION - | BLACK |
| SIGNAL + | GREEN |
| SIGNAL - | WHITE |
| C2 + | GRAY |
| C2 - | VIOLET |
| SHIELD | YELLOW |

4. CABLE WIRE ENDS ARE STRIPPED BACK .50 INCHES [12.7MM] AND TINNED.



LOCATION OF MODEL/SERIAL NUMBER IDENTIFICATION.

2. THIS DRAWING IS SUBJECT TO CHANGE WITHOUT NOTICE.

1. RATED OUTPUT: 2mV/V ±0.002.

NOTES: UNLESS OTHERWISE SPECIFIED

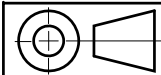
PROPRIETARY NOTICE
ALL DATA AND INFORMATION CONTAINED IN OR DISCLOSED BY THIS DOCUMENT IS CONFIDENTIAL AND PROPRIETARY INFORMATION OF HARDY PROCESS SOLUTIONS INC. AND ALL RIGHTS THEREIN ARE EXPRESSLY RESERVED. BY ACCEPTING THIS MATERIAL THE RECIPIENT AGREES THAT THIS MATERIAL AND THE INFORMATION CONTAINED THEREIN IS HELD IN CONFIDENCE AND IN TRUST AND SHALL NOT BE USED, COPIED, REPRODUCED IN WHOLE OR IN PART, NOR ITS CONTENTS REVEALED IN ANY MANNER TO OTHERS, EXCEPT TO MEET THE SPECIFIC PURPOSE FOR WHICH IT WAS DELIVERED.


10. SEE SHEET 2 FOR FULL SCALE 2 DIMENSIONAL DROP-IN CAD FILE VIEWS.

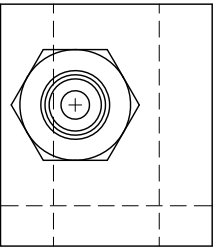
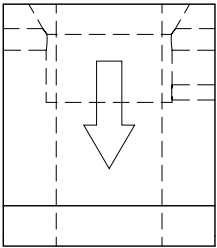
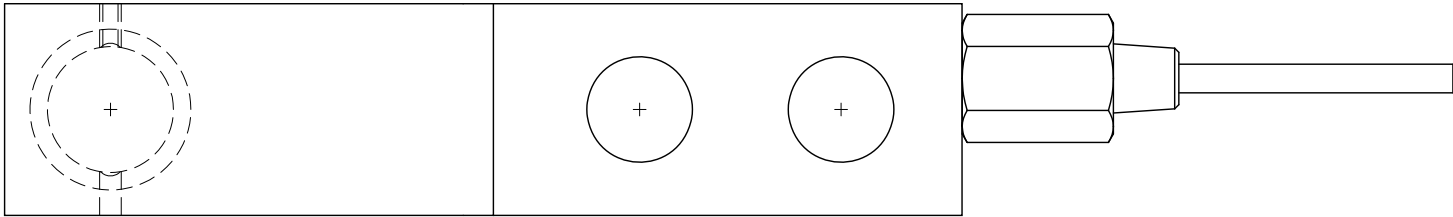
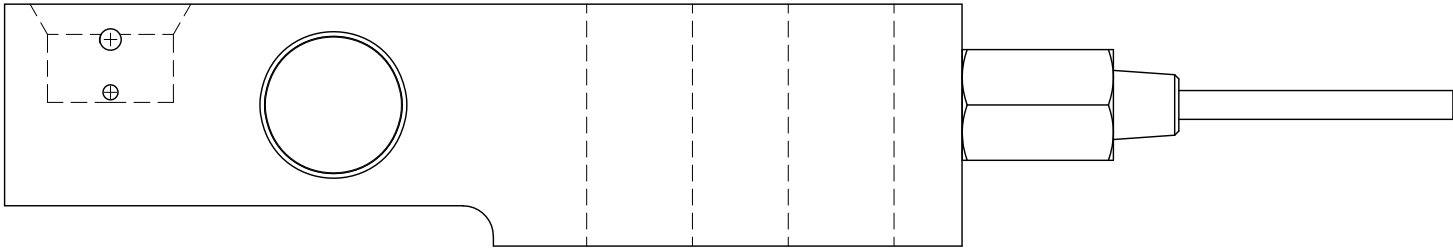
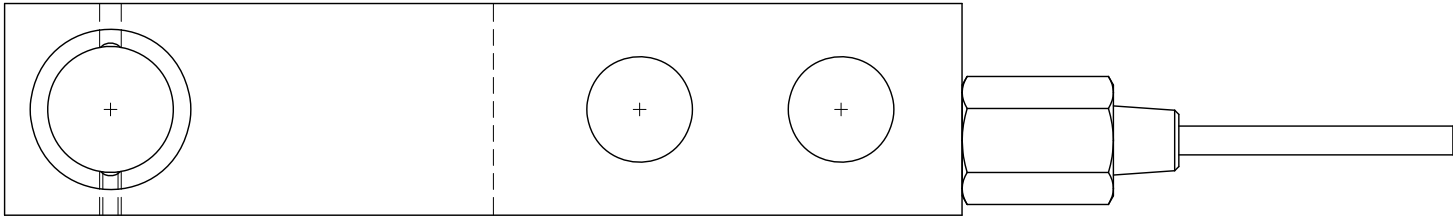
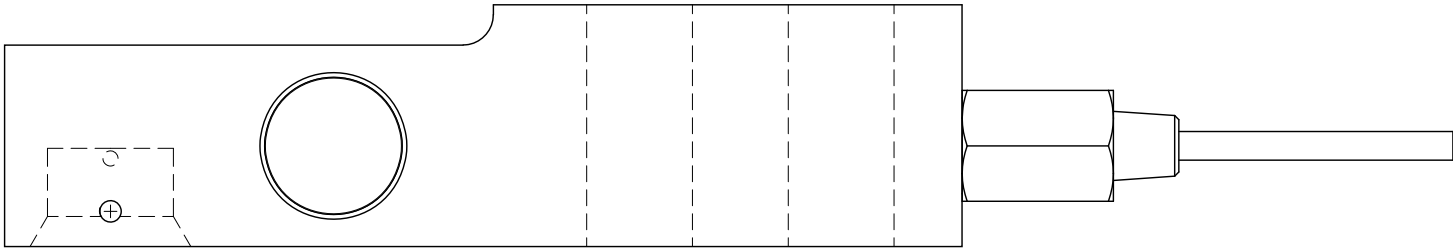
9. LOAD SENSOR COMPENSATED TEMPERATURE RATING IS -10°C TO +40°C.

8. LOAD SENSOR SAFE OPERATING TEMPERATURE RATING IS -20°C TO +65°C.
USAGE OF LOAD SENSOR AT TEMPERATURES BELOW -20°C REQUIRES
THAT THE LOAD SENSOR AND CABLE BE TEMPERATURE CONTROLLED.

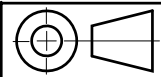
NOTES: UNLESS OTHERWISE SPECIFIED (CONT'D)



		0588-0226	OUTLINE DRAWING, LOAD SENSOR, HISBH04~7.5K						
ITEM	QTY	PART NUMBER	DESCRIPTION				COMMENTS		
PARTS LIST									
UNLESS OTHERWISE SPECIFIED DIMENSIONS ARE IN INCHES [MM] TOLERANCES ARE: DECIMALS: .XX = ±.03 [.8] .XXX = ±.010 [.25] ANGLES: ±0°, 30'		CONTRACT NO.		<div></div> <div>TITLE</div> <div>OUTLINE DRAWING, LOAD SENSOR, HISBH04-7.5K</div>					
		APPROVALS							
		DRAWN V. CHULA	DATE 02-14-24						
		CHECKED J. MOEN	DATE 02-26-24						
MATERIAL	APPROVED V. CHULA		DATE 02-26-24	SIZE FSCM DRAWING NO. REV. D 21316 0588-0226 A					
	FINISH		ISSUED V. CHULA						DATE 02-26-24
		PRODUCTION							DATE
DO NOT SCALE DRAWING				FILE NAME: 588226A1.DWG		SCALE: NONE		SHEET 1 OF 2	



DROP-IN CAD FILE VIEWS



HARDY PROCESS SOLUTIONS			
TITLE OUTLINE DRAWING, LOAD SENSOR, HISBH04-7.5K			
SIZE D	FSCM 21316	DRAWING NO. 0588-0226	REV. A
FILE NAME: 588226A1.DWG		SCALE: NONE	SHEET 2 OF 2